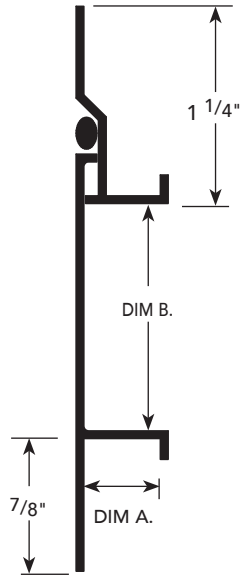


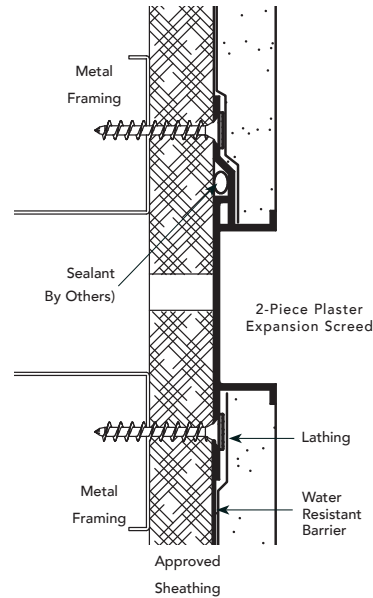
PRODUCT DETAIL



INSTALLATION DETAIL / Cross Section

PD.1

2-PIECE PLASTER EXPANSION SCREED



USAGE

Fry Reglet 2-Piece Plaster Expansion Screed is used inside plaster (or outside stucco) to prevent cracking. Separates wall sections and allows minor independent movement of sections on either side. Installed vertically or horizontally, they provide an attractive reveal consistent with the appearance of other Fry Reglet moldings. Fry Reglet's 2-Piece Plaster Expansion Screed allows for 3/16" of movement.

NOTE: Qualifies for use as an expansion joint for stucco and plaster applications when installed in accordance with ASTM C1063.

GUIDE SPECIFICATION

Where indicated on drawings, Fry Reglet 2-Piece Plaster Expansion Screed, as manufactured by Fry Reglet Corporation, shall be installed. Aluminum shall be extruded alloy 6063 T5, with chemical conversion coating, clear anodized or other specified finish. Refer

to finish section.

PERFORMANCE REQUIREMENTS

2-Piece Plaster Expansion Screed shall withstand rainfall of 8" per hour with wind loads up to 41.6 lbs per square foot equivalent to 130+ mph wind driven rain) with no water intrusion when tested in accordance with ASTM 331.

SIZES

DIM. A	DIM. B REVEAL WIDTH	NUMBER
1/2"	3/4"	DCS-50-75 2-PC
1/2"	1 1/2"	DCS-50-150 2-PC
3/4"	1/4"	PCS-75-25 2-PC
3/4"	1/2"	PCS-75-50 2-PC
3/4"	3/4"	PCS-75-75 2-PC
3/4"	1"	PCS-75-100 2-PC
3/4"	1 1/2"	PCS-75-150 2-PC
3/4"	2"	PCS-75-200 2-PC