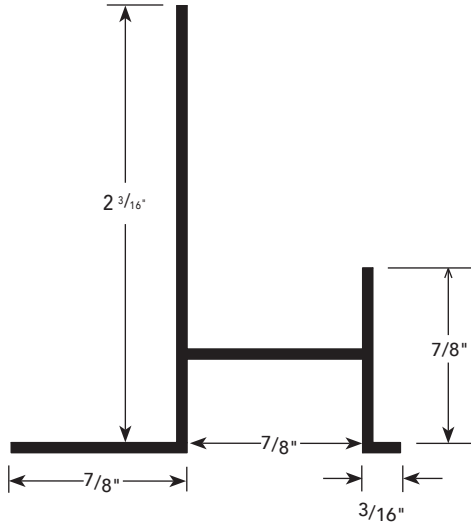


**DRIP  
SCREED**

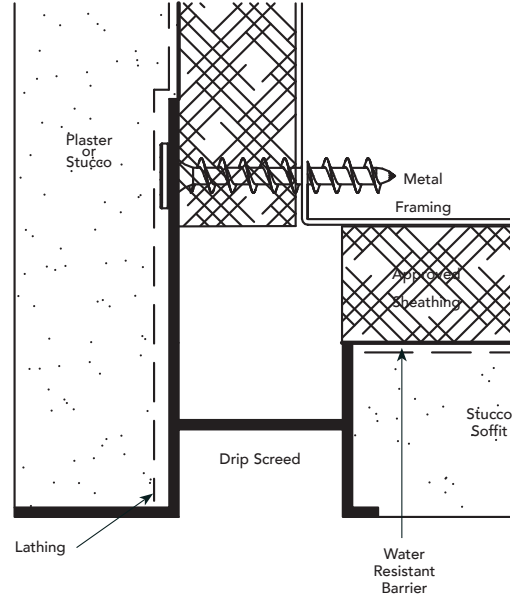


**USAGE**

Fry Reglet Drip Screed neatly joins soffit and fascia while providing a drip joint to prevent water stains on soffit and vertical wall of building. Can be vented if air movement is required. Accommodates a 7/8" plaster fascia and soffit thickness of 7/8" or less by trimming vertical leg on soffit side of molding).

**GUIDE SPECIFICATION**

Where indicated on drawings, Fry Reglet Drip Screed, as manufactured by Fry Reglet Corporation, shall be installed. Aluminum shall be extruded alloy 6063 T5, with chemical conversion coating, clear anodized or other specified finish. Refer to finish section.



**SIZES**

**NUMBER**

NON-VENTED	VENTED
DS-875-875	DS-875-V-875