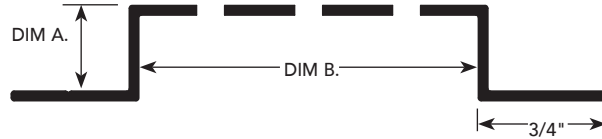


**CLEANFINISH  
E.I.F.S. SOFFIT  
VENT**



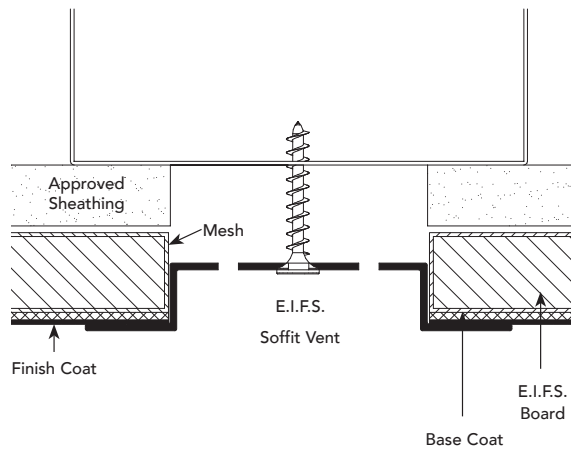
**USAGE**

- Specially designed to be installed after E.I.F.S. application is complete, Fry Reglet's CleanFinish soffit vent covers up any finish imperfections with one clean, straight strip.
- CleanFinish vented molding is inserted and held in place with appropriate fasteners that screw through to the concealed framing in the soffit.
- As a result, CleanFinish soffit vents save time and money, because there's no masking or clean up required, and any surface imperfections are concealed behind the soffit trim.
- Extruded aluminum CleanFinish vents are available with clear anodized or paint finishes, and come in 2", 3" and 4" widths.

**GUIDE SPECIFICATION**

Where indicated on drawings, Fry Reglet CleanFinish E.I.F.S. Soffit Vent, as manufactured by Fry Reglet Corporation, shall be installed. Aluminum shall be extruded alloy 6063 T5, with chemical conversion coating, clear anodized or other specified finish. Refer to finish section.

**INSTALLATION DETAIL / Cross Section**



**SIZES\***

DIM. A	DIM. B	NUMBER	UNVENTED
1/2"	2"	SV-50-V-200/EIFS	SV-50-200/EIFS
1/2"	3"	SV-50-V-300/EIFS	SV-50-300/EIFS
1/2"	4"	SV-50-V-400/EIFS	SV-50-400/EIFS
3/4"	3"	SV-75-V-300/EIFS	SV-75-300/EIFS

\*See page PJ-1 for data on number of vents and amount of vented area/sq. ft.