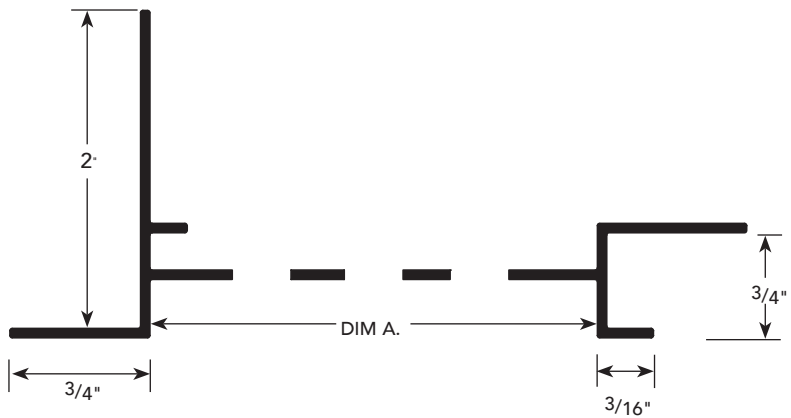


PRODUCT DETAIL

PE.2

3/4" SOFFIT VENT



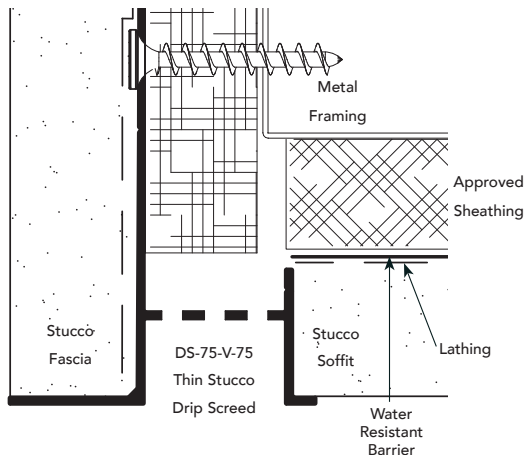
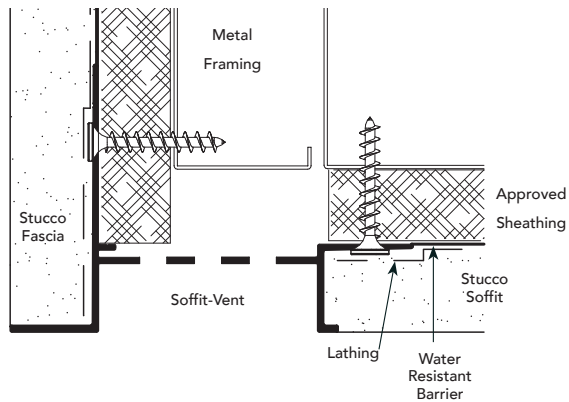
INSTALLATION DETAILS / Cross Section

USAGE

Fry Reglet Soffit Vent functions as a drip screed and provides ventilation to areas above soffit. Separates soffit from fascia with a reveal and adds a sharp uniform edge to soffit/fascia joint.

GUIDE SPECIFICATION

Where indicated on drawings, Fry Reglet Soffit Vent, as manufactured by Fry Reglet Corporation, shall be installed. Aluminum shall be extruded alloy 6063 T5, with chemical conversion coating, clear anodized or other specified finish. Refer to finish section.



SIZES*

DIM. A REVEAL WIDTH	NUMBER
3/4"	DS-75-V-75
2"	DS-75-V-200
3"	DS-75-V-300

*See page PJ-1 for data on number of vents and amount of vented area/sq. ft.