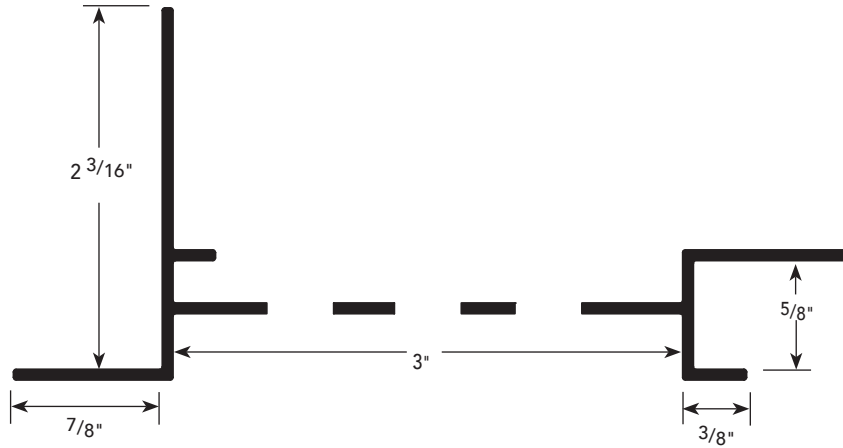


5/8" SOFFIT VENT



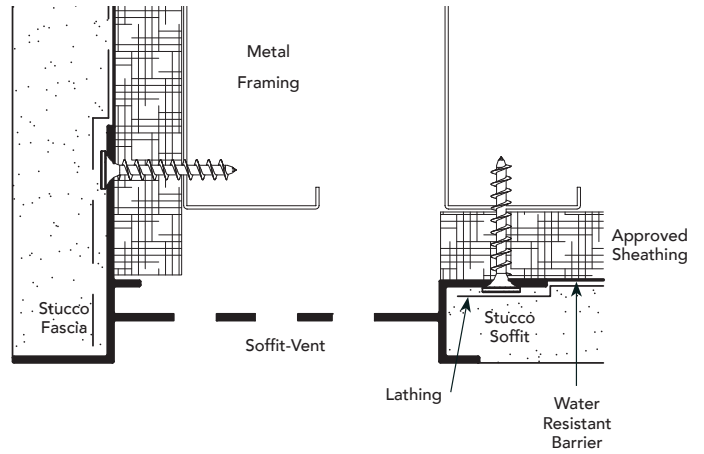
USAGE

Fry Reglet 5/8" Soffit Vent functions as a drip screed and vent for areas above soffit. Features a 3/8" long bottom leg to support 5/8" soffit material.

GUIDE SPECIFICATION

Where indicated on drawings, Fry Reglet 5/8" Soffit Vent, as manufactured by Fry Reglet Corporation, shall be installed. Aluminum shall be extruded alloy 6063 T5, with chemical conversion coating, clear anodized or other specified finish. Refer to finish section.

INSTALLATION DETAIL / Cross Section



SIZES\*

SOFFIT SUPPORT FLANGE	REVEAL WIDTH	NUMBER
5/8"	3"	DS-875-5/8-V-300

\*See page PJ-1 for data on number of vents and amount of vented area/sq. ft.