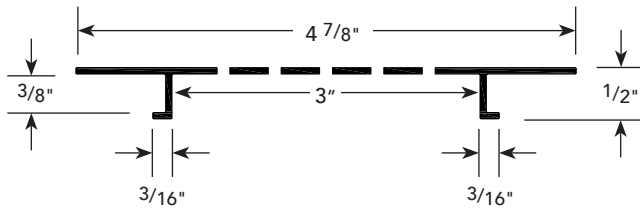
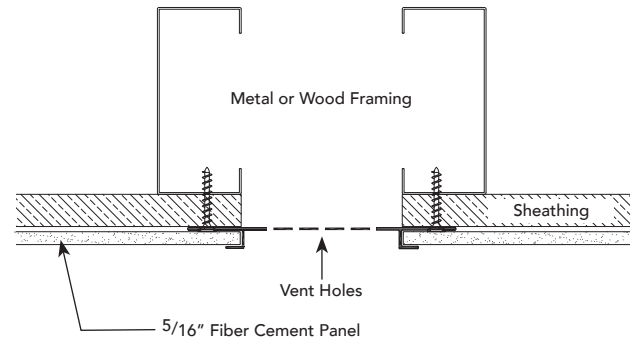


SOFFIT VENT



INSTALLATION DETAIL / Cross Section



USAGE

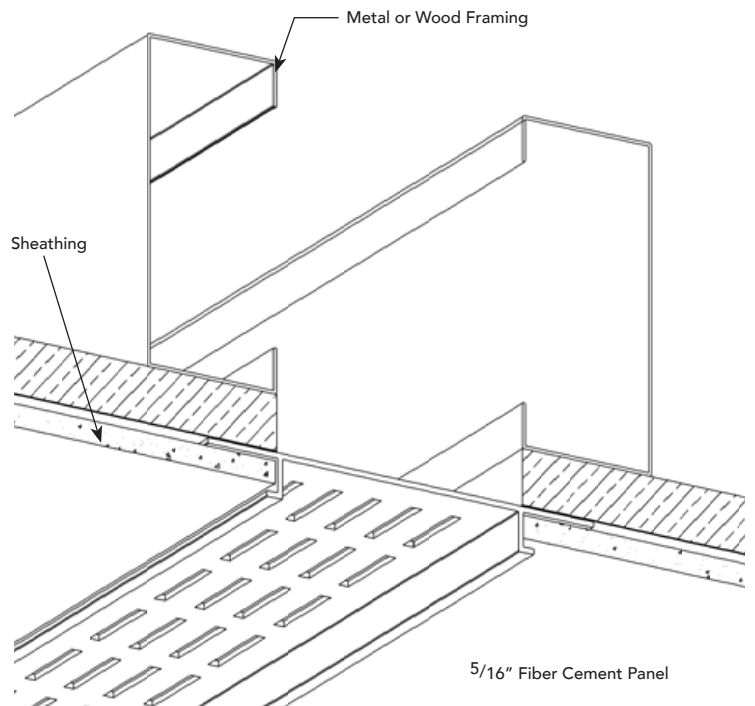
Fry Reglet FCP Soffit Vent provides ventilation to areas above the soffit, forming an attractive reveal between Fiber Cement Panels.

GUIDE SPECIFICATION

Where indicated on drawings, Fry Reglet Soffit Vent, as manufactured by Fry Reglet Corporation, shall be installed. Aluminum shall be extruded alloy 6063 T5, with primed finish, clear anodized or other specified finish. Refer to finish section.

NOTE: Attach panel in accordance with the manufacturers fastening schedule. Not to be used in horizontal applications.

INSTALLATION DETAIL / ISO View



SIZES*

REVEAL DEPTH	NUMBER
NOM. 3/8"	FCP-PCS375V300

*See page 46 for data on number of vents and amount of vented area/sq. ft.