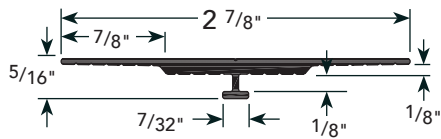


DA.5

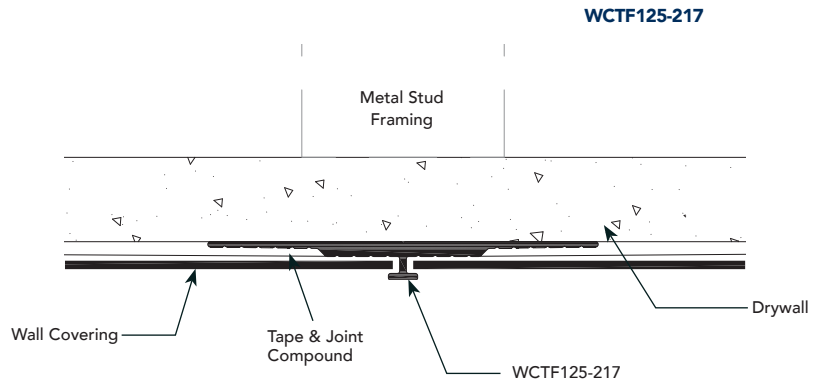
PRODUCT DETAIL

WALL COVERING TRIMS

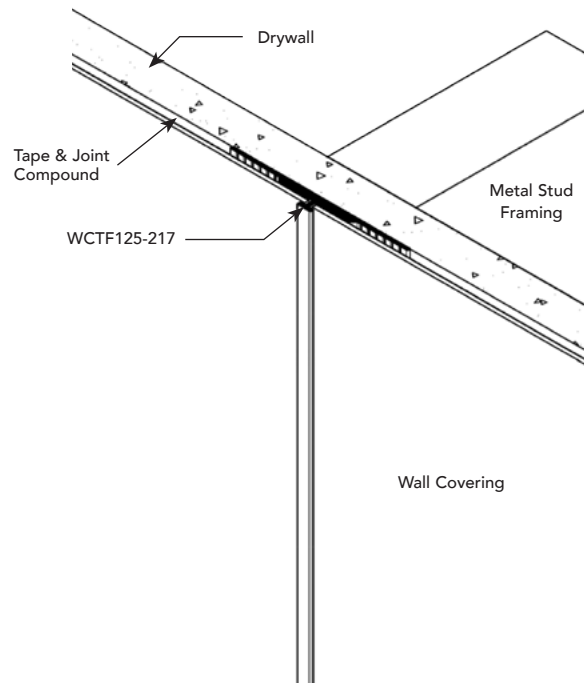
WCTF125-217 (FIELD)



INSTALLATION DETAIL / Cross Section



INSTALLATION DETAIL / ISO View



USAGE

Fry Reglet Wall Cover Trim Field is used as a vertical or horizontal trim allowing accents between wall coverings. For all types of wall coverings 1/8" thick or less.

GUIDE SPECIFICATION

Where indicated on the drawings, Fry Reglet Wall Cover Trim Field, as manufactured by Fry Reglet Corporation, shall be installed. Aluminum shall be extruded 6063 T5, with chemical conversion coating, clear anodized or other specified finish. Refer to finish section.