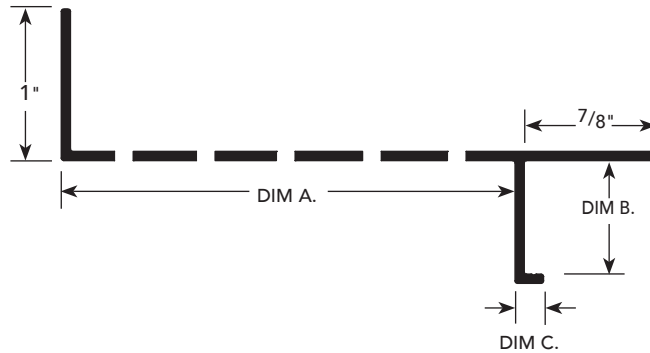


PERIMETER  
SOFFIT  
MOLDING



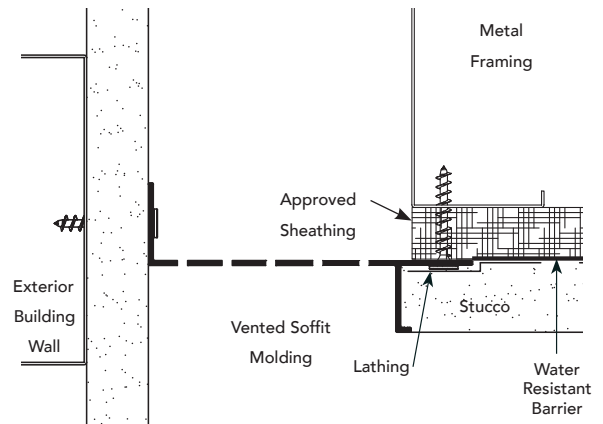
USAGE

Fry Reglet Perimeter Soffit Molding provides a reveal and venting capability for soffits and a screed point for applying stucco. Can be installed next to building exterior wall or against the inside of the fascia framing depending on choice of location of venting.

GUIDE SPECIFICATION

Where indicated on drawings, Fry Reglet Perimeter Soffit Molding, as manufactured by Fry Reglet Corporation, shall be installed. Aluminum shall be extruded alloy 6063 T5, with chemical conversion coating, clear anodized or other specified finish. Refer to finish section.

INSTALLATION DETAIL / Cross Section



SIZES\*

DIM. B. STUCCO DEPTH	DIM. A REVEAL WIDTH	DIM. C LEG WIDTH	NUMBER
1/2"	3"	1/2"	WPM-50-V-300
3/4"	2"	3/16"	1680-V
3/4"	3"	3/16"	WPM-75-V-300
3/4"	4"	3/16"	WPM-75-V-400

\*See page PJ-1 for data on number of vents and amount of vented area/sq. ft.