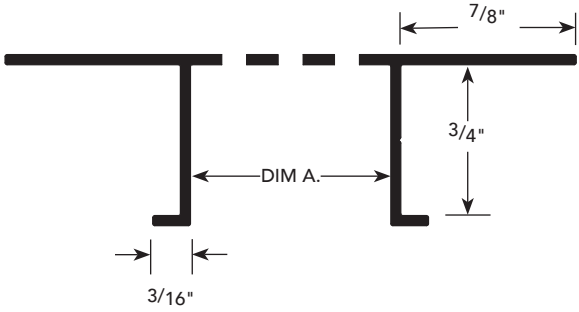


**PRODUCT DETAILS**

**PH.2**

**E.I.F.S. SOFFIT VENT**



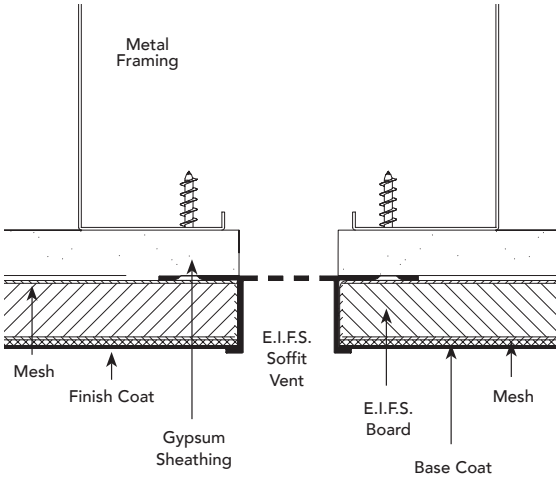
**USAGE**

Fry Reglet E.I.F.S. Soffit Vent is sized for use in soffits with an E.I.F.S. system. Forms attractive reveal and provides air flow into spaces above soffit.

**GUIDE SPECIFICATION**

Where indicated on drawings, Fry Reglet E.I.F.S. Soffit Vent, as manufactured by Fry Reglet Corporation, shall be installed. Aluminum shall be extruded alloy 6063 T5, with chemical conversion coating, clear anodized or other specified finish or other specified. Refer to finish section.

**INSTALLATION DETAIL / Cross Section**



**SIZES\***

DIM. A	NUMBER
1/2"	PCS-75-V-50
3/4"	PCS-75-V-75
1"	PCS-75-V-100
1 1/2"	PCS-75-V-150
2"	PCS-75-V-200
2 1/2"	PCS-75-V-250
3"	PCS-75-V-300
4"	PCS-75-V-400
6"	PCS-75-V-600

\*See page PJ-1 for data on number of vents and amount of vented area/sq. ft.