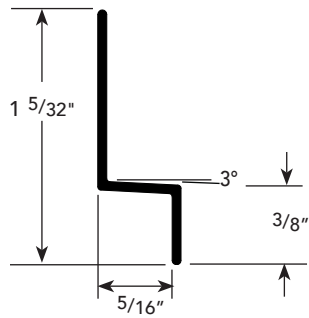


PRODUCT DETAIL



USAGE

Fry Reglet FCP Panel Flashing Trim profile provides a clean and consistent horizontal transition between fiber cement panels. The angled flashing leg is intended to move moisture out of the profile. The FCP Panel Flashing Trim profile is designed as a general-purpose flashing molding independent from the reveal system. Available in a primed finish and 8' lengths.

GUIDE SPECIFICATION

Where indicated on drawings, Fry Reglet Panel Flashing Trim, as manufactured by Fry Reglet Corporation, shall be installed per manufacturer's recommendations. Aluminum shall be extruded alloy 6063 T5, with primed finish, clear anodized or other specified finish. Refer to finish section.

NOTE: To be used in a horizontal application only. Attach panel in accordance with the manufacturer's fastening schedule.

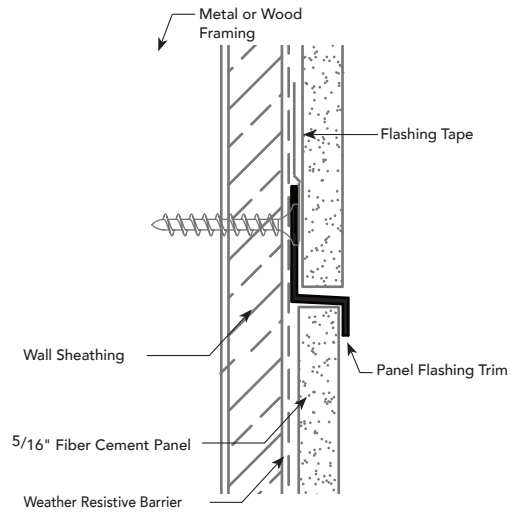
SIZES

REVEAL DEPTH	NUMBER
NOM. 5/16"	FCP-P-FLASH

INSTALLATION DETAIL / Cross Section

A.44

PANEL FLASHING TRIM



INSTALLATION DETAIL / ISO View

