

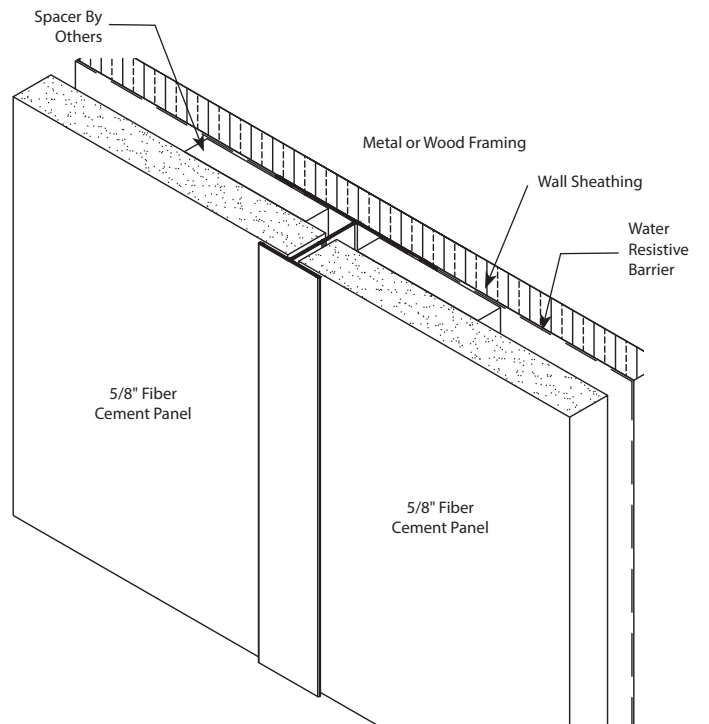
USAGE

Fry Reglet FCP Vertical H Molding 1060 provides a 1" spline between fiber cement panels. The 1" exposed spline covers the panels edges to create a vertical design element. 5/8" panels can be used with 3/8" furring strips.

GUIDE SPECIFICATION

Where indicated on drawings, Fry Reglet Vertical H Molding 1060, as manufactured by Fry Reglet Corporation, shall be installed. Aluminum shall be extruded alloy 6063 T5, with primed finish, clear anodized or other specified finish. Refer to finish section.

NOTE: Not to be used in horizontal applications. Attach panel in accordance with the panel manufacturers fastening schedule.



SIZES

REVEAL DEPTH	NUMBER
NOM 1 1/16"	FCP-H 1060