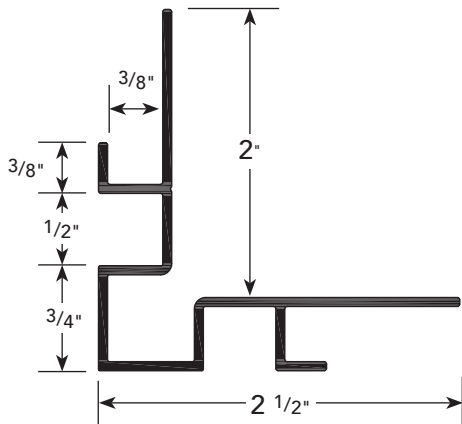


PRODUCT DETAIL



USAGE

Fry Reglet FCP Batten Outside Corner creates a straight and true outside corner. Exposed flanges cover the vertical ends of the fiber cement panels creating a 3/4" x 3/4" batten, and double 1/2" vertical reveals.

GUIDE SPECIFICATION

Where indicated on drawings, Fry Reglet Batten Outside Corner, as manufactured by Fry Reglet Corporation, shall be installed. Aluminum shall be extruded alloy 6063 T5, with primed finish, clear anodized or other specified finish. Refer to finish section.

NOTE: Attach panel in accordance with the manufacturers fastening schedule. Not to be used in horizontal applications.

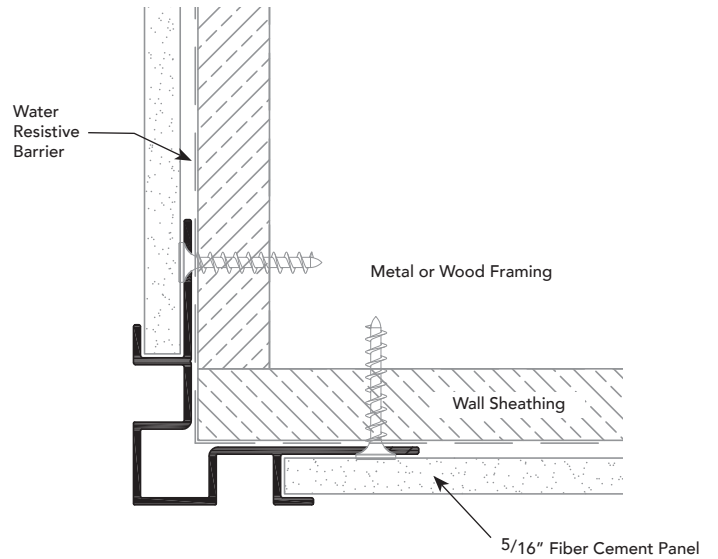
SIZES

REVEAL DEPTH	NUMBER
NOM. 3/8"	FCP-O/SCNRRVL

INSTALLATION DETAIL / Cross Section

A.36

BATTEN OSC



INSTALLATION DETAIL / ISO View

