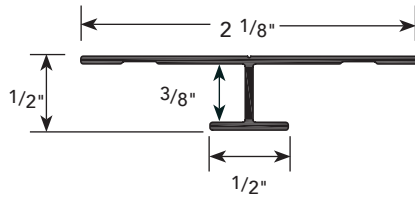


A.3

PRODUCT DETAIL

**VERTICAL
H MOLDING**



USAGE

Fry Reglet FCP Vertical H Molding provides a 1/2" spline between fiber cement panels. The 1/2" exposed spline covers the panels edges to create a vertical design element. This can also be used in soffit applications.

GUIDE SPECIFICATION

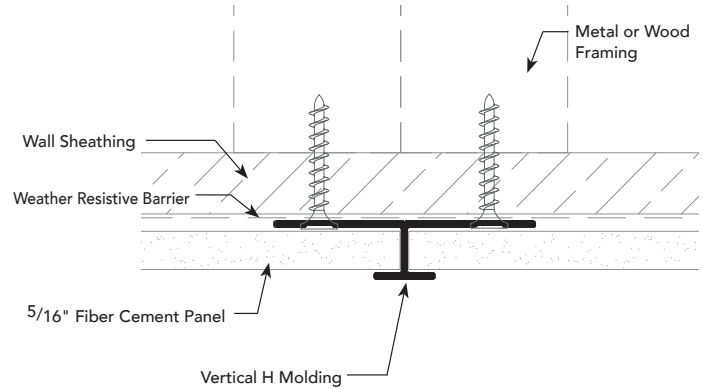
Where indicated on drawings, Fry Reglet Vertical H Molding, as manufactured by Fry Reglet Corporation, shall be installed. Aluminum shall be extruded alloy 6063 T5, with primed finish, clear anodized or other specified finish. Refer to finish section.

NOTE: Not to be used in horizontal applications. Attach panel in accordance with the panel manufacturers fastening schedule.

SIZES

REVEAL DEPTH	NUMBER
NOM. 3/8"	FCP-H VERT MOLD

INSTALLATION DETAIL / Cross Section



INSTALLATION DETAIL / ISO View

