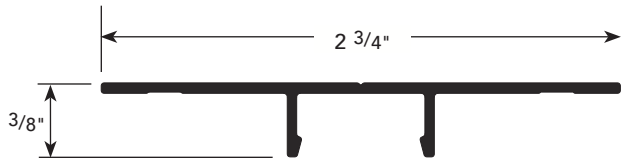


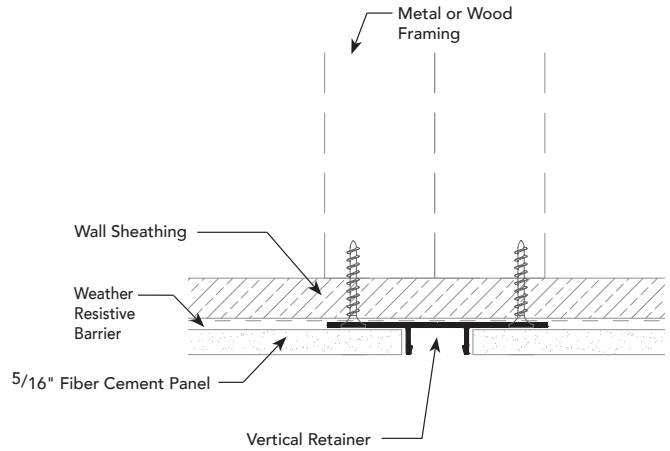
A.5

PRODUCT DETAIL

**VERTICAL
RETAINER**



INSTALLATION DETAIL / Cross Section



USAGE

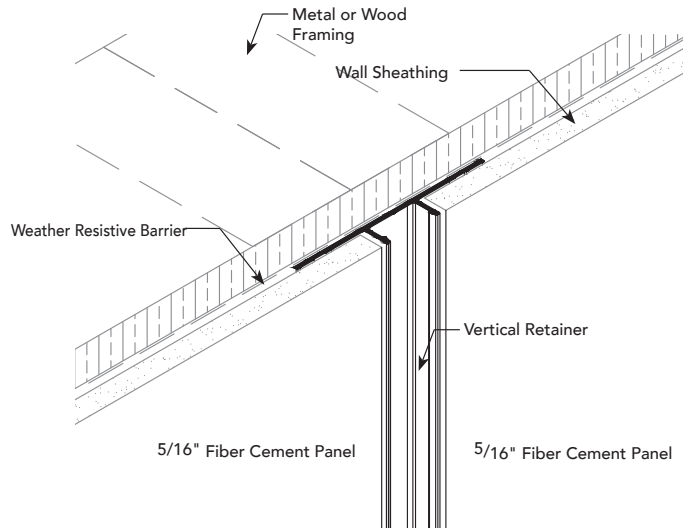
Fry Reglet FCP Vertical Retainer acts as the receiver for a Vertical Insert, Vertical Offset or Vertical Lap Insert. This allows for an easy panel installation with a reduced chance for material damage.

GUIDE SPECIFICATION

Where indicated on drawings, Fry Reglet Vertical Retainer, as manufactured by Fry Reglet Corporation, shall be installed. Aluminum shall be extruded alloy 6063 T5, with clear anodized finish.

NOTE: Not to be used in horizontal applications. Attach panel in accordance with the manufacturers fastening schedule.

INSTALLATION DETAIL / ISO View



SIZES

| REVEAL DEPTH | NUMBER |
|--------------|--------------|
| NOM. 3/8" | FCP-VERT RET |