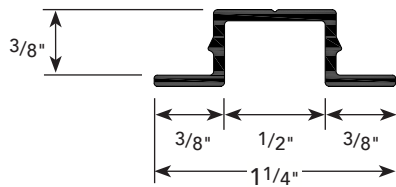


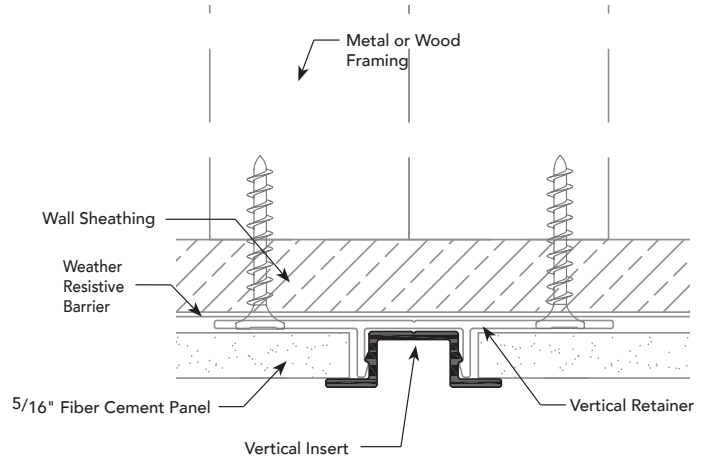
PRODUCT DETAIL



INSTALLATION DETAIL / Cross Section

A.6

VERTICAL INSERT



USAGE

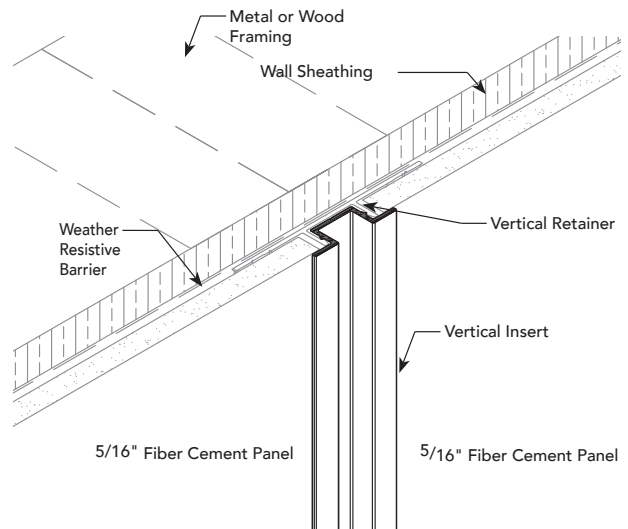
Fry Reglet FCP Vertical Insert creates an attractive architectural reveal when used in conjunction with the Fry Reglet Vertical Retainer. This is ideal for usage with 5/16" fiber cement panels.

GUIDE SPECIFICATION

Where indicated on drawings, Fry Reglet Vertical Insert, as manufactured by Fry Reglet Corporation, shall be installed. Aluminum shall be extruded alloy 6063 T5, with primed finish, clear anodized or other specified finish. Refer to finish section.

NOTE: Attach panel in accordance with the manufacturers fastening schedule. Not to be used in horizontal applications.

INSTALLATION DETAIL / ISO View



SIZES

REVEAL DEPTH	NUMBER
NOM. 3/8"	FCP-VERT INSERT