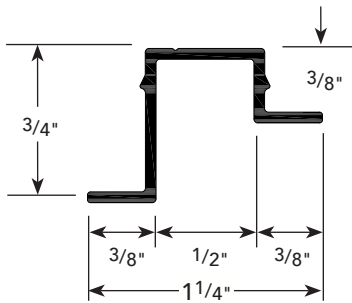


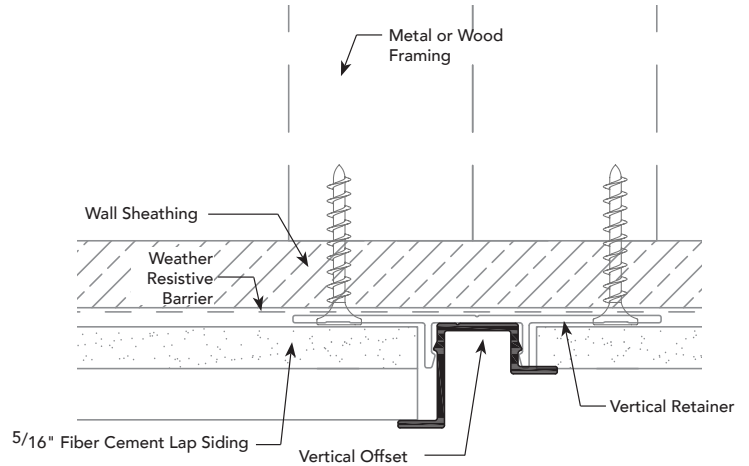
A.7

PRODUCT DETAIL

VERTICAL
OFFSET



INSTALLATION DETAIL / Cross Section



USAGE

Fry Reglet FCP Vertical Offset creates an attractive architectural reveal when used in conjunction with the Fry Reglet Vertical Retainer. This is ideal for usage at the transition from a single layer of 5/16" fiber cement panels to lap siding configuration.

GUIDE SPECIFICATION

Where indicated on drawings, Fry Reglet Vertical Offset, as manufactured by Fry Reglet Corporation, shall be installed. Aluminum shall be extruded alloy 6063 T5, with primed finish, clear anodized or other specified finish. Refer to finish section.

NOTE: Attach panel in accordance with the manufacturers fastening schedule. Not to be used in horizontal applications.

SIZES

REVEAL DEPTH	REVEAL DEPTH	NUMBER
NOM. 3/4"	NOM. 3/8"	FCP-VERT OFFSET

INSTALLATION DETAIL / ISO View

